



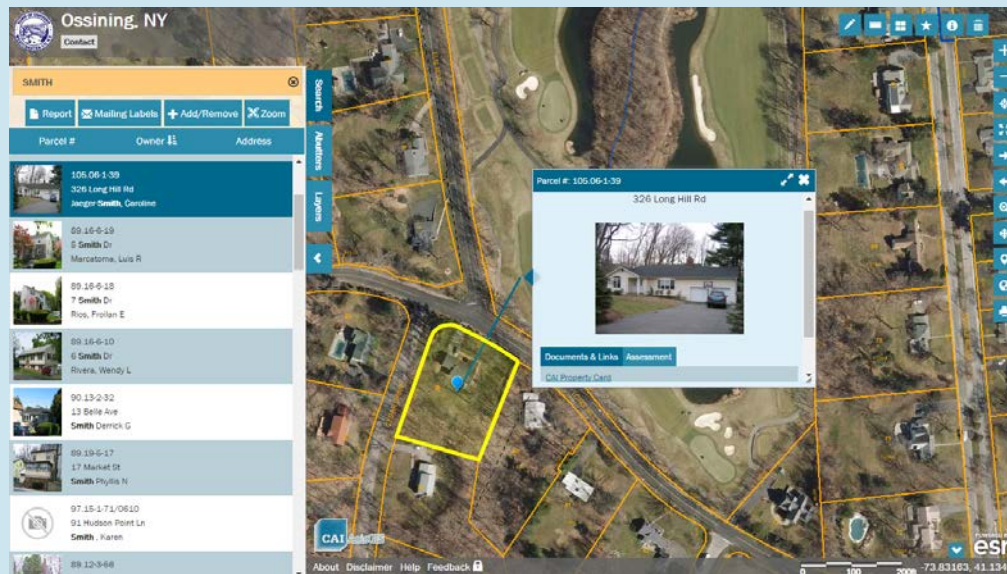
Using GIS To Support Municipal Operations VALA 2021

COMPANY BACKGROUND

- Founded in 1985 as a Municipal Mapping Company
- 1986 – Began providing Digital Mapping Services
- 1996 – Developed & Introduced PWIM department
Public Works Information Management
- 2009 – Introduced Web Services GIS Platform SaaS
- 2015 – Released AxisGIS Platform
- 2019 – Acquired Russell Graphics
- 2020 – Acquired Maintstreet GIS
- 600+ clients in the Northeastern US
- Nearly 400 clients contract AxisGIS (53 in VT)

AxisGIS PLATFORM

- Cloud-based Software as a Service (SaaS) GIS platform utilizes state-of-the-art Esri ArcGIS Server technology
- Designed to function on both desktop and mobile devices
- Communities distribute their local government information allowing users to query, browse, report, and print maps
- No upfront hardware or software purchase and maintenance costs



AxisGIS BENEFITS

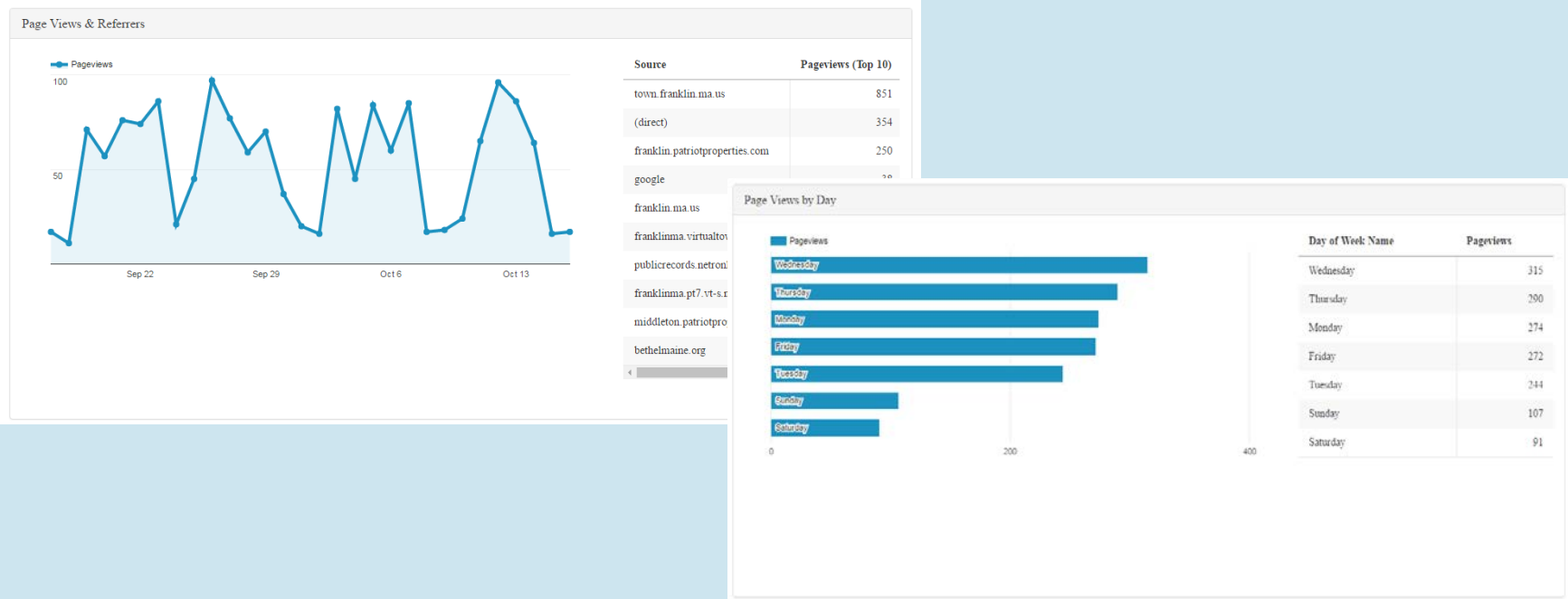
- Annual hosting fee is based on population, # of data layers or aerial imagery layers doesn't effect price
- Once a year new data layers can be added at no additional cost
- Unlimited tech support
- Secure login, unlimited number of users per Staff Site
- Integration with many different platforms including ArcGIS Online, Google, Microsoft, Eagleview, NearMap and many permitting/asset management software
- Ability to have documents linked to a parcel that are only viewable to staff and not to the public
- Add-on tools for advanced querying and data editing.

AxisGIS STAFF SITE TOOLS

Analytics Report

Analytics utilizes Google Analytics to provide information on the amount of use your site is receiving in the past 30, 60 or 90 days, and how the users are accessing the site:

Total of 1593 Page Views




AxisGIS STAFF SITE TOOLS

CAMA Not in GIS / GIS Not in CAMA Lists

CAMA Not in GIS(28) Download Close

CamaFullNumber	GisFullNumber	PropertyAddress	OwnerName
888-098-000-005	888-098-000	MINE BROOK	
888-128-000-001	888-128-000	PINE ST	
888-013-000-002	888-013-000	CYPRESS LN	
888-078-000-001	888-078-000	JORDAN RD	
777-001-000-000	777-001-000	GROVE ST	
777-002-000-000	777-002-000	GROVE ST	
777-003-000-000	777-003-000	FORGE HILL RD	
777-004-000-000	777-004-000	GROVE ST	
888-106-000-010	888-106-000	MINE BROOK	

Listings generated of all CAMA records that do not link with a GIS parcel. Since there is no matching GIS parcel, these records cannot be successfully searched within AxisGIS.

 CAMA Not in GIS.csv

	A	B	C	D
1	CamaFullNumber	GisFullNumber	PropertyAddress	OwnerName
2	888-034-002-000	888-034-002	UNION ST	XXXXXXXX, XXXXX
3	888-052-292-003	888-052-292	SPRING ST	XXXXXXXX, XXXXX
4	888-073-000-001	888-073-000	POND ST	XXXXXXXX, XXXXX
5	888-075-144-000	888-075-144	DEAN AV	XXXXXXXX, XXXXX
6	888-078-000-001	888-078-000	JORDAN RD	XXXXXXXX, XXXXX

These lists can be saved as a CSV file and opened within a spreadsheet to work through making the necessary corrections.

AxisGIS STAFF SITE TOOLS

Abutters To Any Feature

On the public site you can only find Abutters to a parcel. Staff Users can use the Identify Tool to select a feature and buffer it. In this example Wetlands is used to perform the abutter list.

The screenshot displays the AxisGIS Staff Site Tools interface. On the left, the 'Find Abutters' tool is active, showing a map with a red buffer around a selected feature. The tool includes a 'Select parcels within:' section with a distance of 50 Feet and a 'Select' button. Below this is an 'Add/Remove' button. The 'Reports' section offers options for 'Abutters Report' and 'Mailing Labels', each with 'Pdf' and 'Excel' output formats. On the right, the 'MA DEP Wetlands' data table is displayed, showing details for a selected wetland feature.

MA DEP Wetlands	
OBJECTID_1	250
OBJECTID	250
WETCODE	7
IT_VALC	DM
IT_VALDESC	DEEP MARSH
POLY_CODE	2
PALIS_ID	72051

[Zoom to](#)

AxisGIS STAFF SITE TOOLS

Abutters To Map Markup's

Staff Users can select a markup feature drawn by the user and buffer it. In this example a point is placed on an above ground storage tank and a 500' buffer is created.



AxisGIS STAFF SITE TOOLS

Download Shapefile

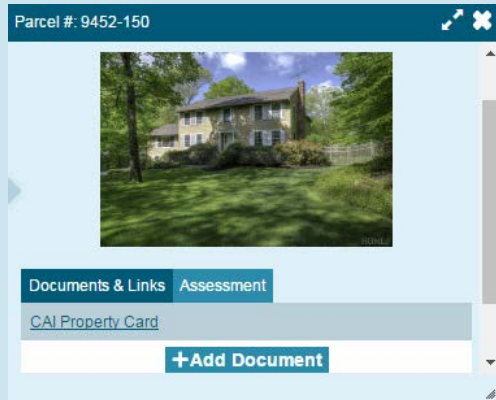
When logged in to the staff site an extra icon appears next to each of the Layers



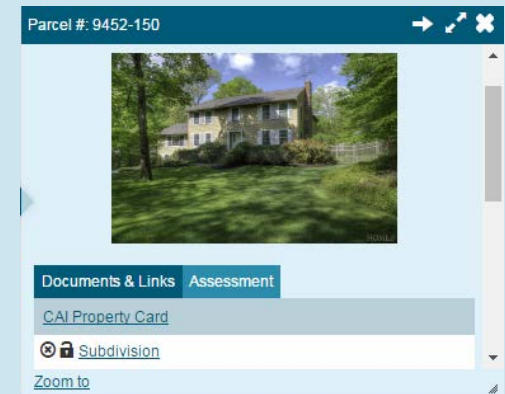
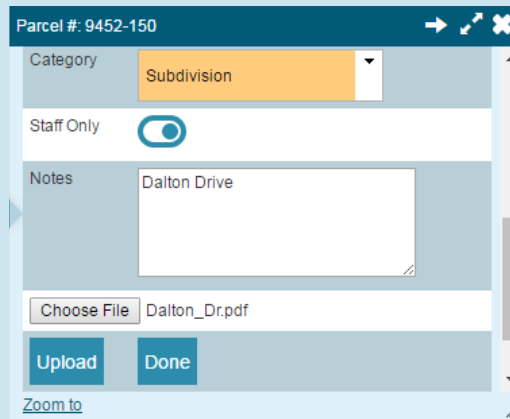
Click on the icon and you'll be given the option to "Download shapefile". The user can choose to download the entire layer, or define a geographic extent on the map to clip the layer to and only download data only within that area.

AxisGIS STAFF SITE DOCUMENT UPLOAD TOOL – ADD-ON

- Staff Site clients can purchase an Individual Document Upload Tool



Using this tool, users can drag/drop or browse and select documents to link to a parcel. When uploading the document the user can determine if the document should be accessible to the public or only Staff users.



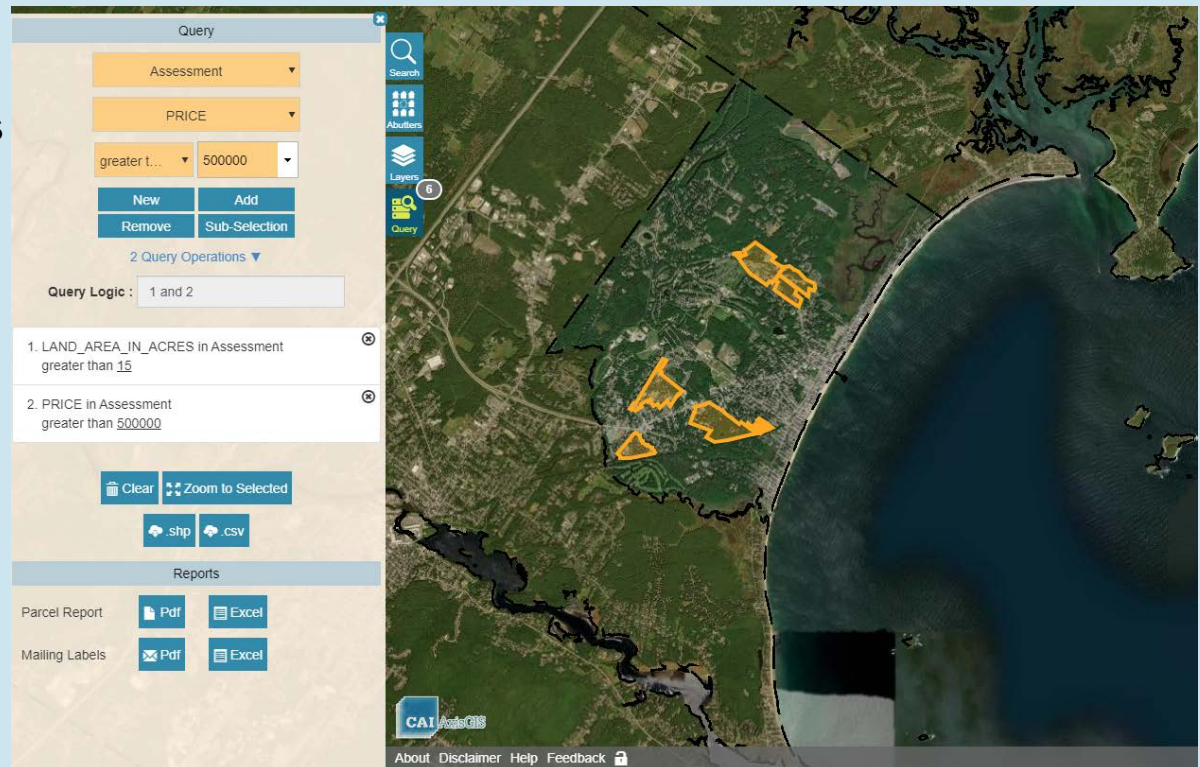
Common Documents Uploaded

- Deeds
- Surveys
- Permits
- Building Floor Plans
- Septic Designs
- Additional photos
- Scanned notes or older Tax Cards

AxisGIS ADVANCED QUERY TOOL – ADD-ON

- GIS tool for users to create custom queries of database and feature attributes
- Parcels queries allow for exporting results:

- PDF Report
- Mailing Labels
- .CSV File
- Shapefile



AxisGIS EDITOR SERVICE – ADD-ON

- GIS tools for users to create, edit, query and share geographic content
- Develop and share GIS data with internal staff users and/or the public, real-time with no additional data publishing or processing

- Tools including:

Geographic Selection

Select By Attributes

Export to .CSV

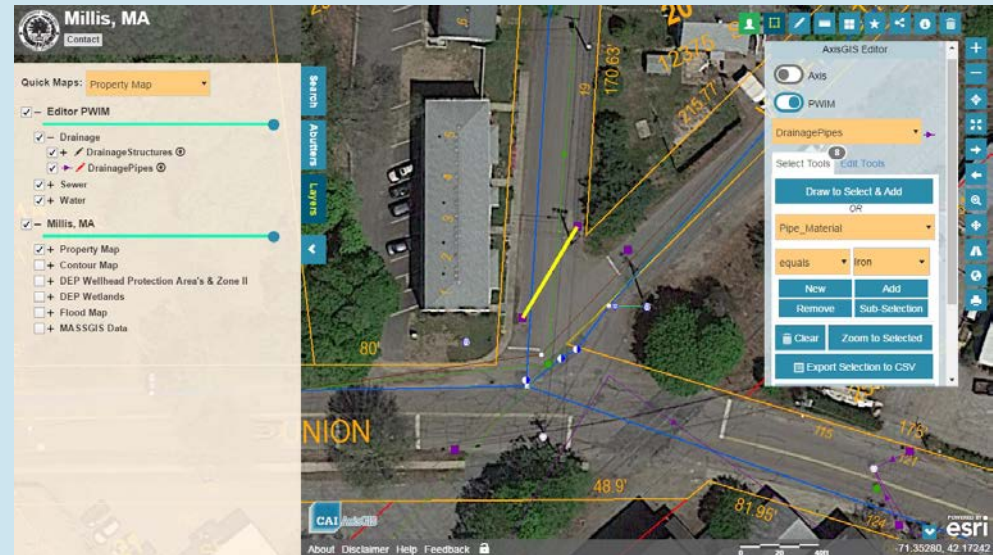
Export Data to Shapefile

Edit Lines, Points, Polygons

Snapping and Reverse Flow

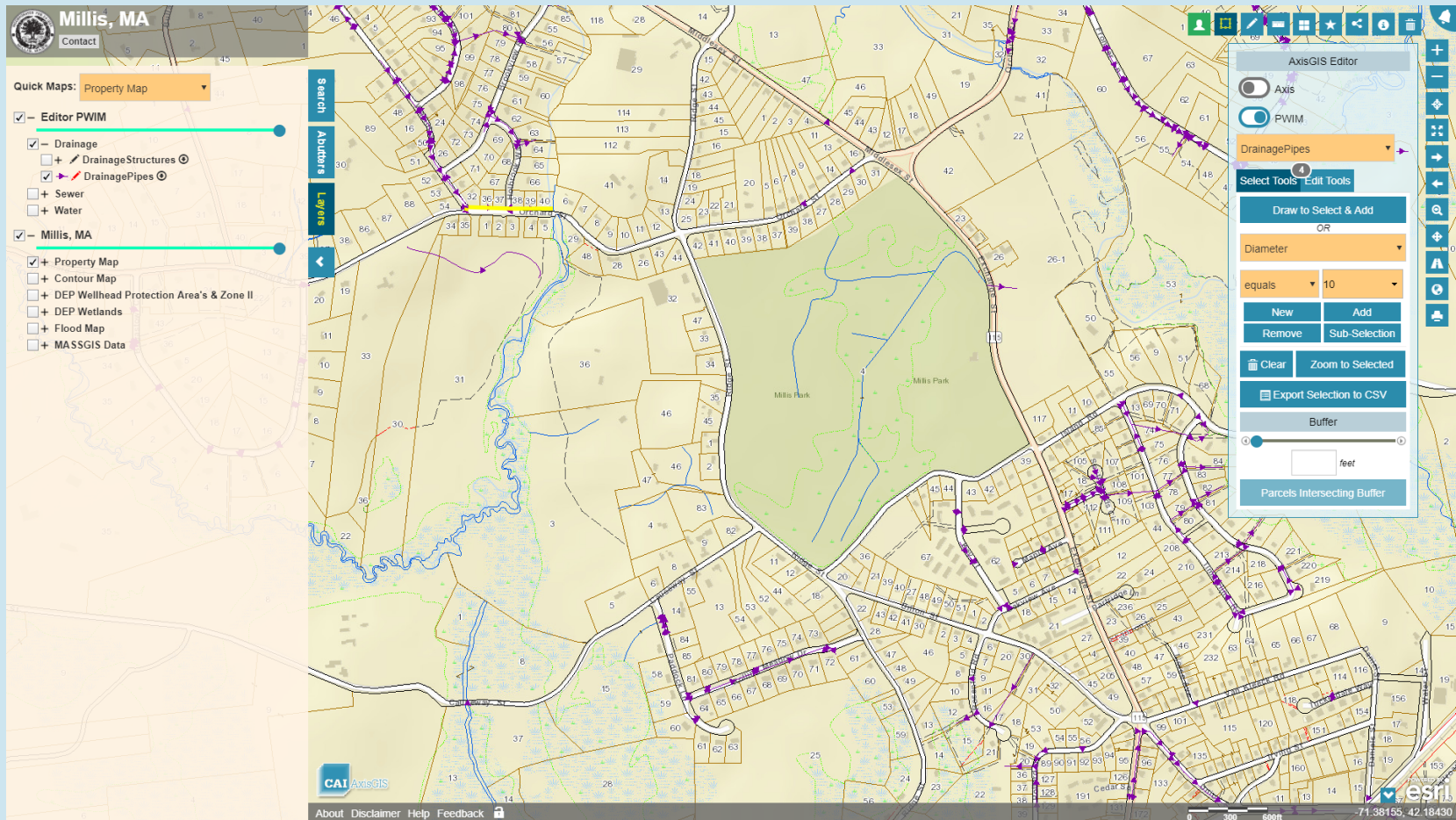
Attach pictures/documents to features

Edit related tables i.e. Inspections



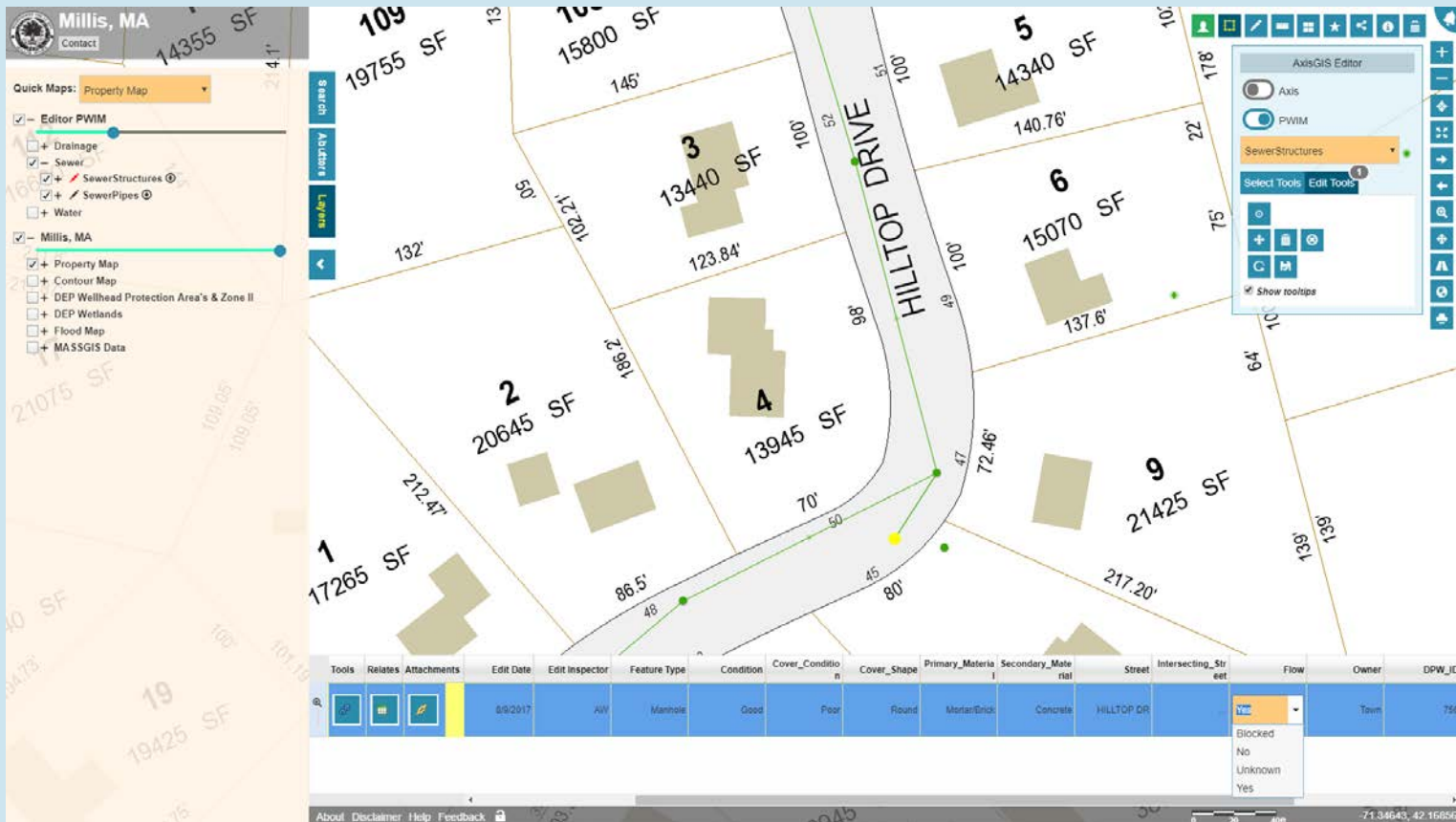
AxisGIS EDITOR SERVICE – ADD-ON

Custom query capabilities > Select all 10" Corrugated Metal Drainage Pipes



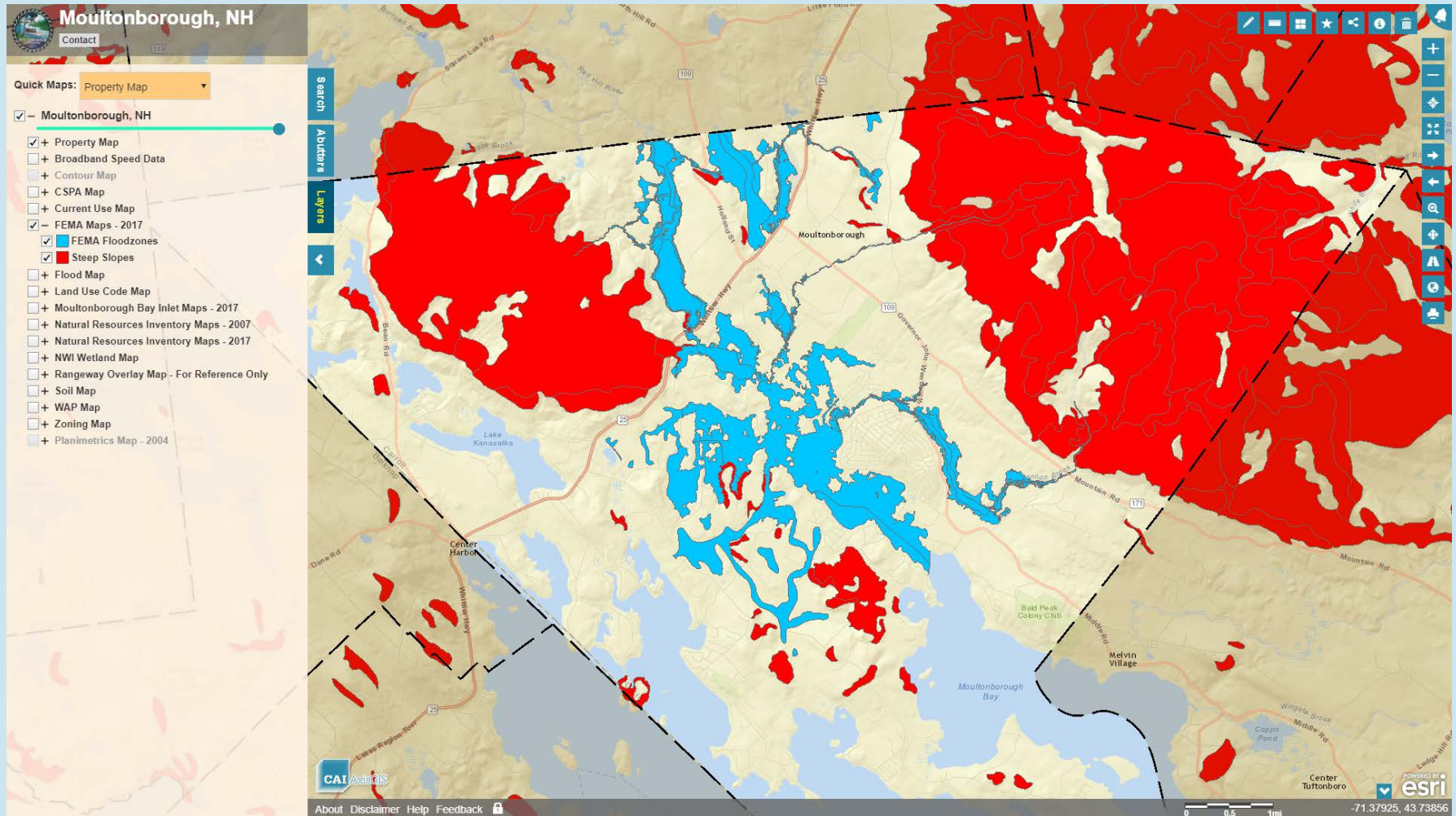
AxisGIS EDITOR SERVICE – ADD-ON

Feature Editing > Select existing features, or add new ones and edit attributes, attach photos/documents, edit related inspection tables etc.



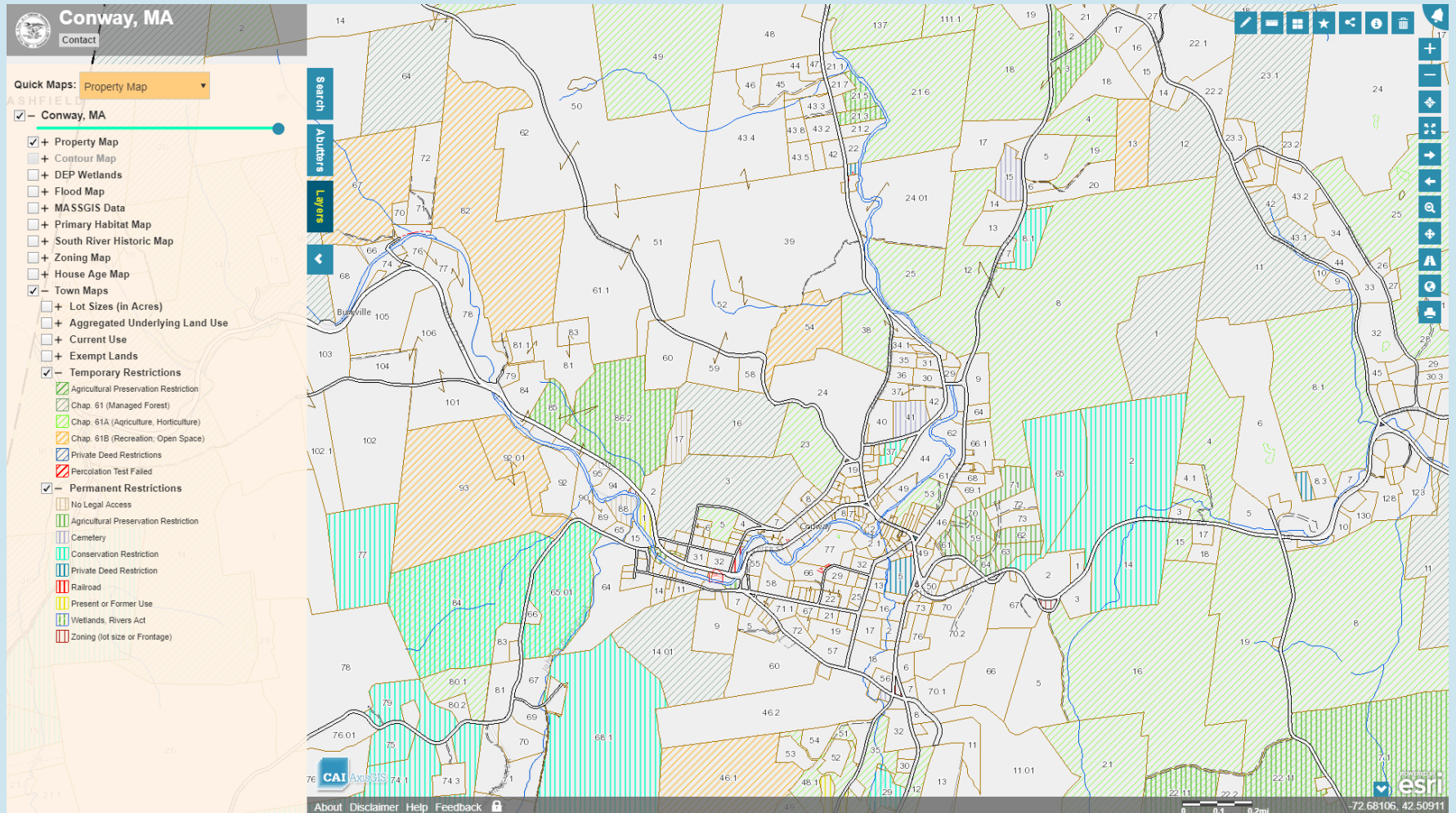
AxisGIS COMMON ADDITIONAL MAP LAYERS

FLOOD ZONES / STEEP SLOPES



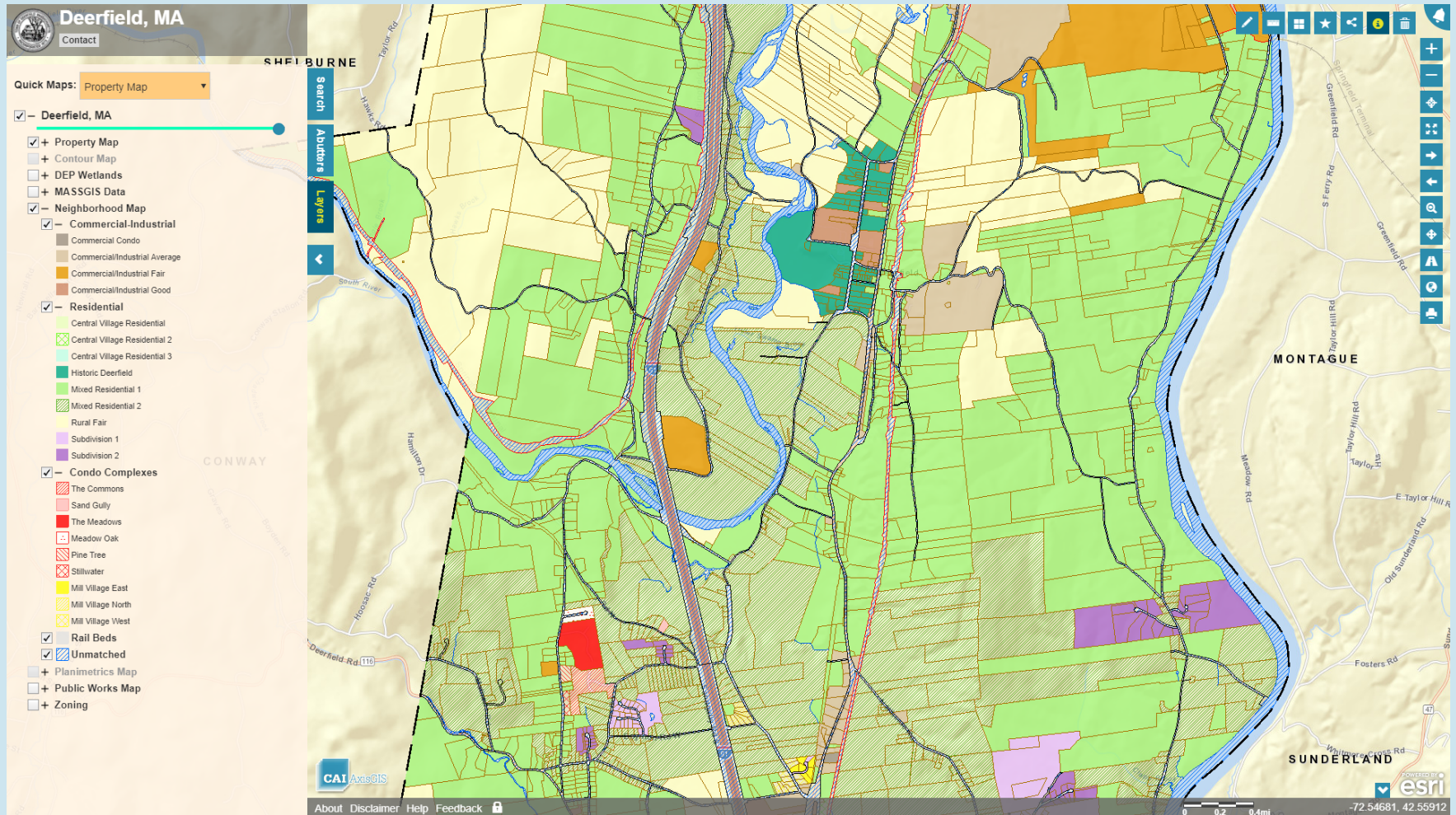
AxisGIS COMMON ADDITIONAL MAP LAYERS

LAND RESTRICTIONS



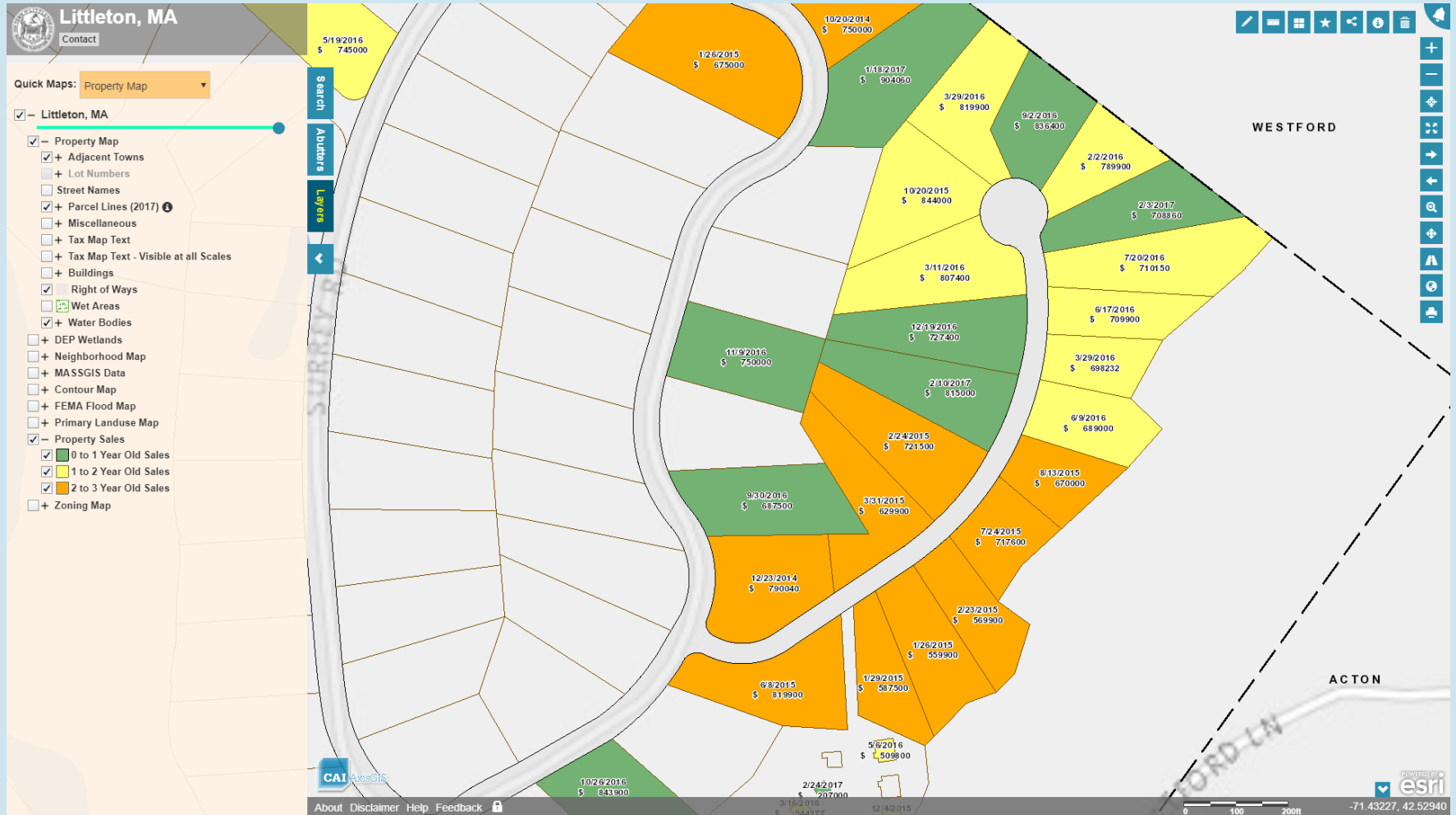
AxisGIS COMMON ADDITIONAL MAP LAYERS

NEIGHBORHOOD MAP



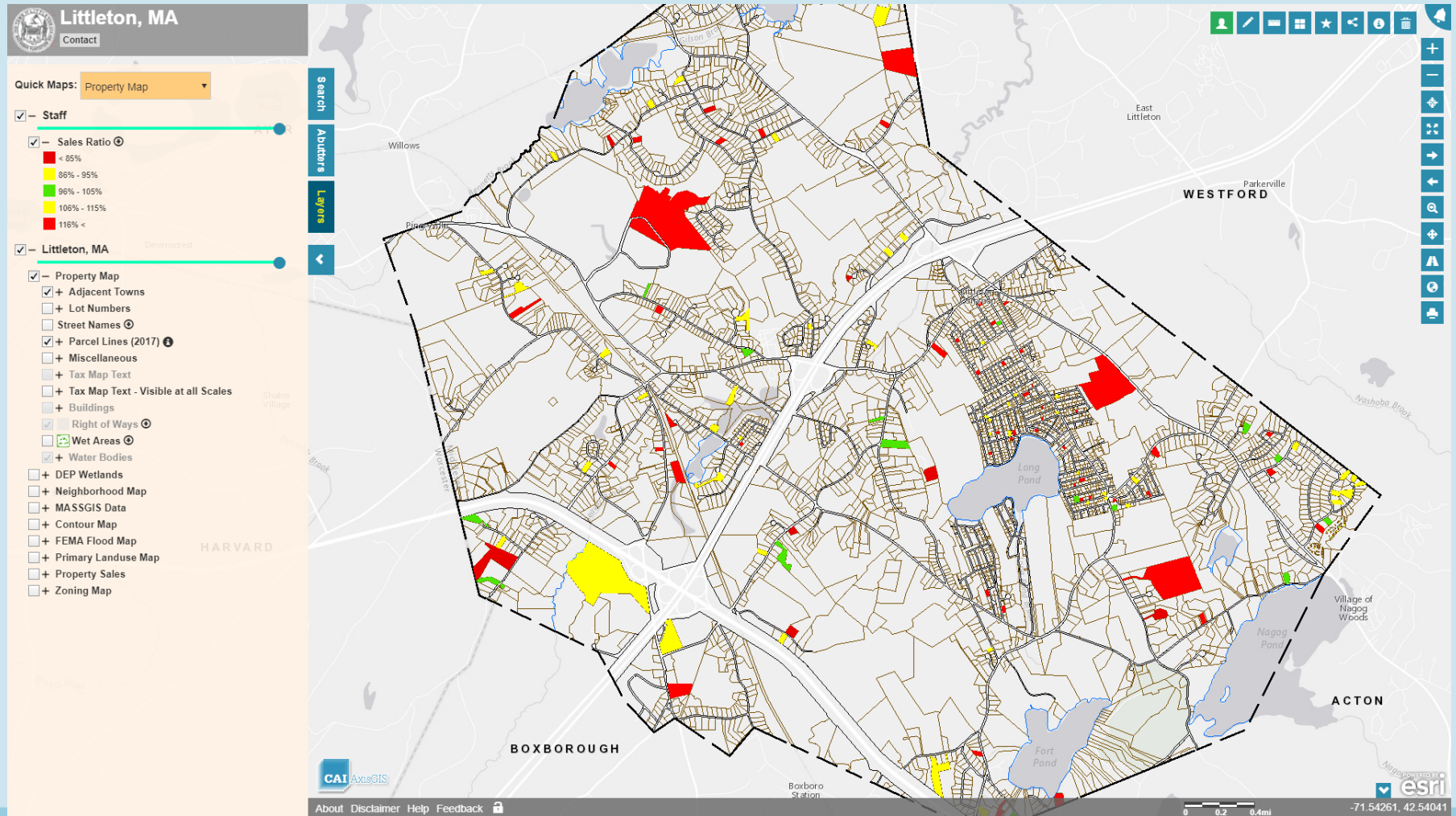
AxisGIS COMMON ADDITIONAL MAP LAYERS

SALES HISTORY



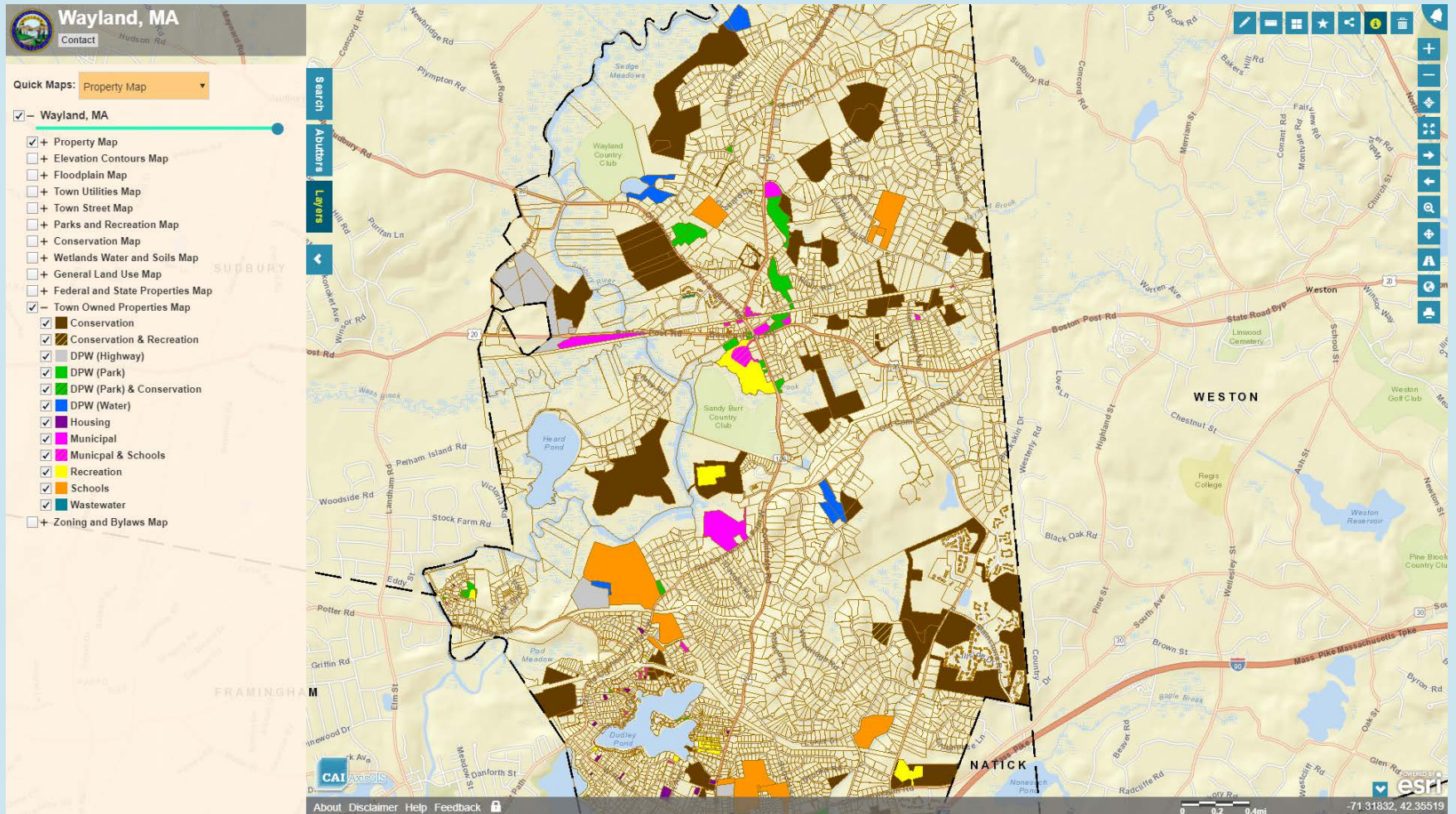
AxisGIS COMMON ADDITIONAL MAP LAYERS

SALES RATIO



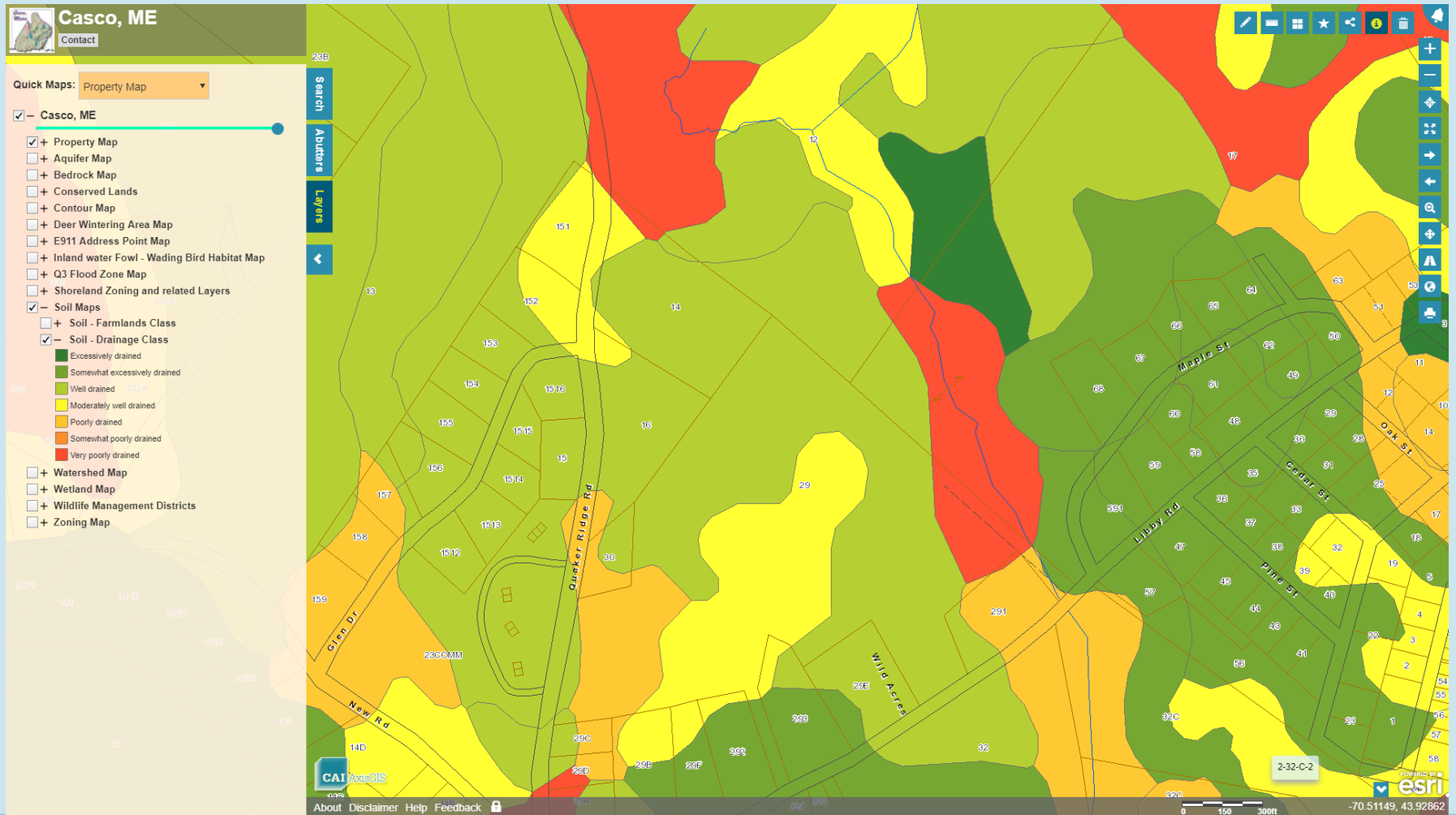
AxisGIS COMMON ADDITIONAL MAP LAYERS

TOWN OWNED PROPERTY



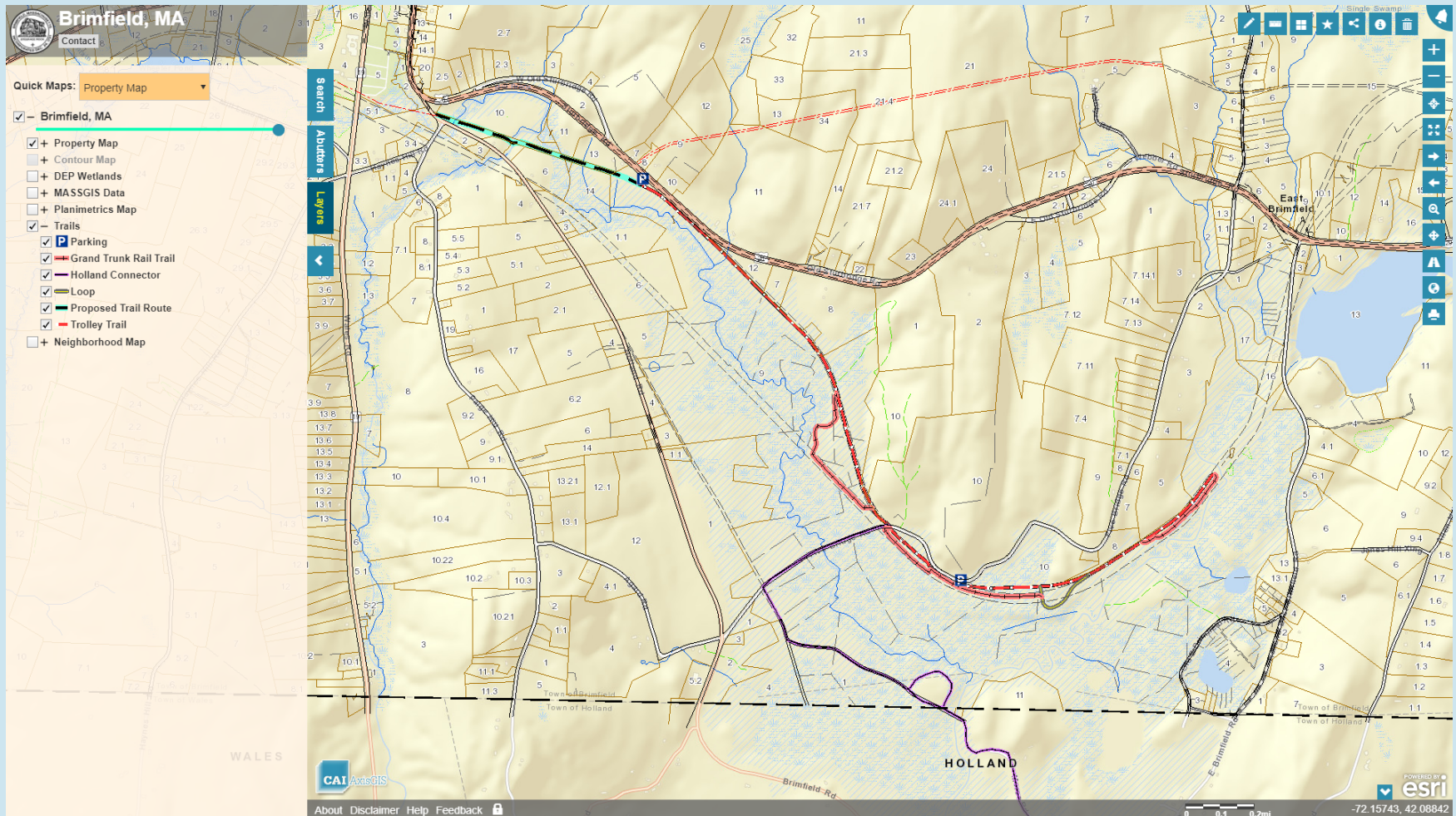
AxisGIS COMMON ADDITIONAL MAP LAYERS

SOILS



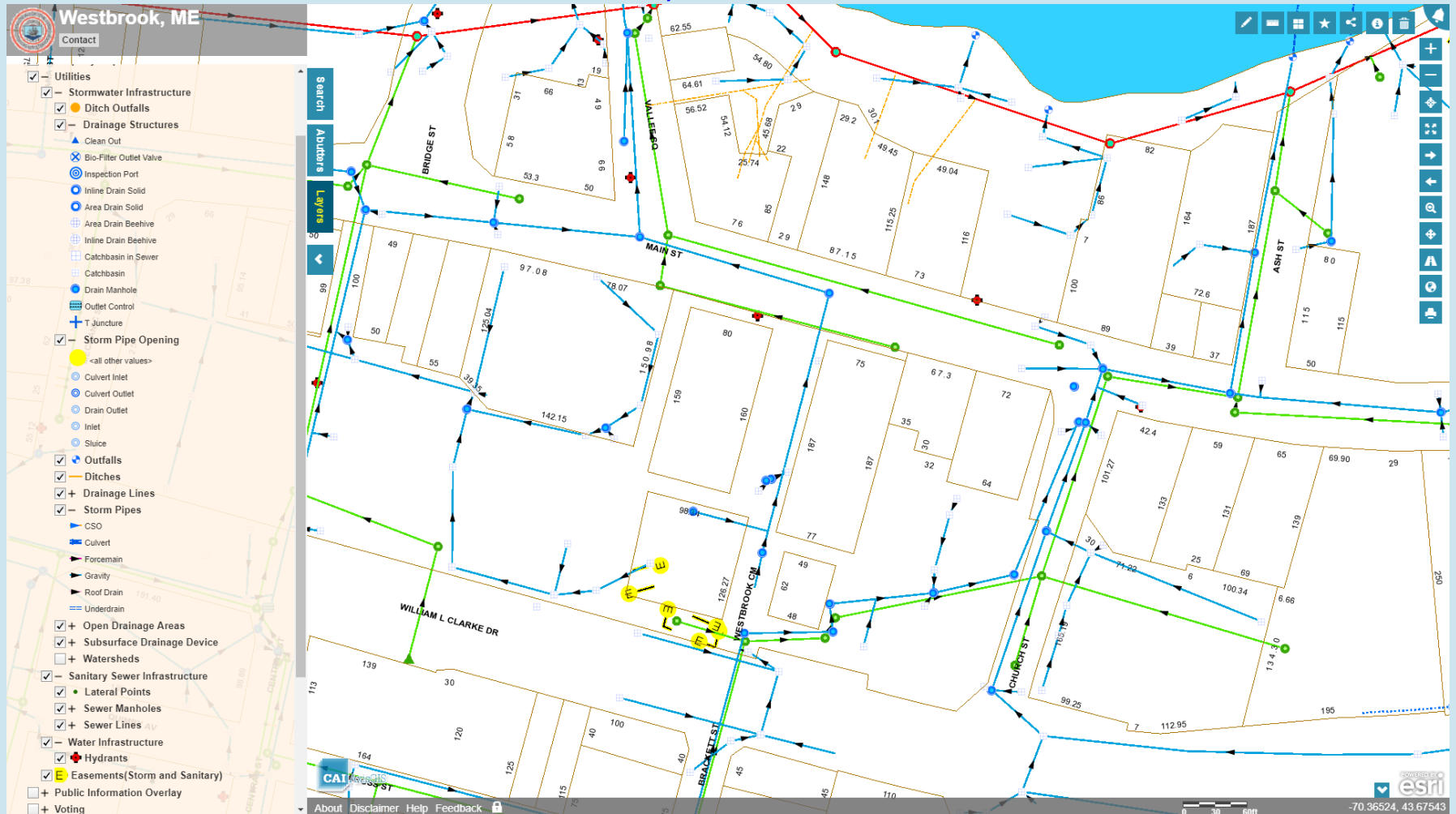
AxisGIS COMMON ADDITIONAL MAP LAYERS

TRAILS



AxisGIS COMMON ADDITIONAL MAP LAYERS

UTILITIES/INFRASTRUCTURE



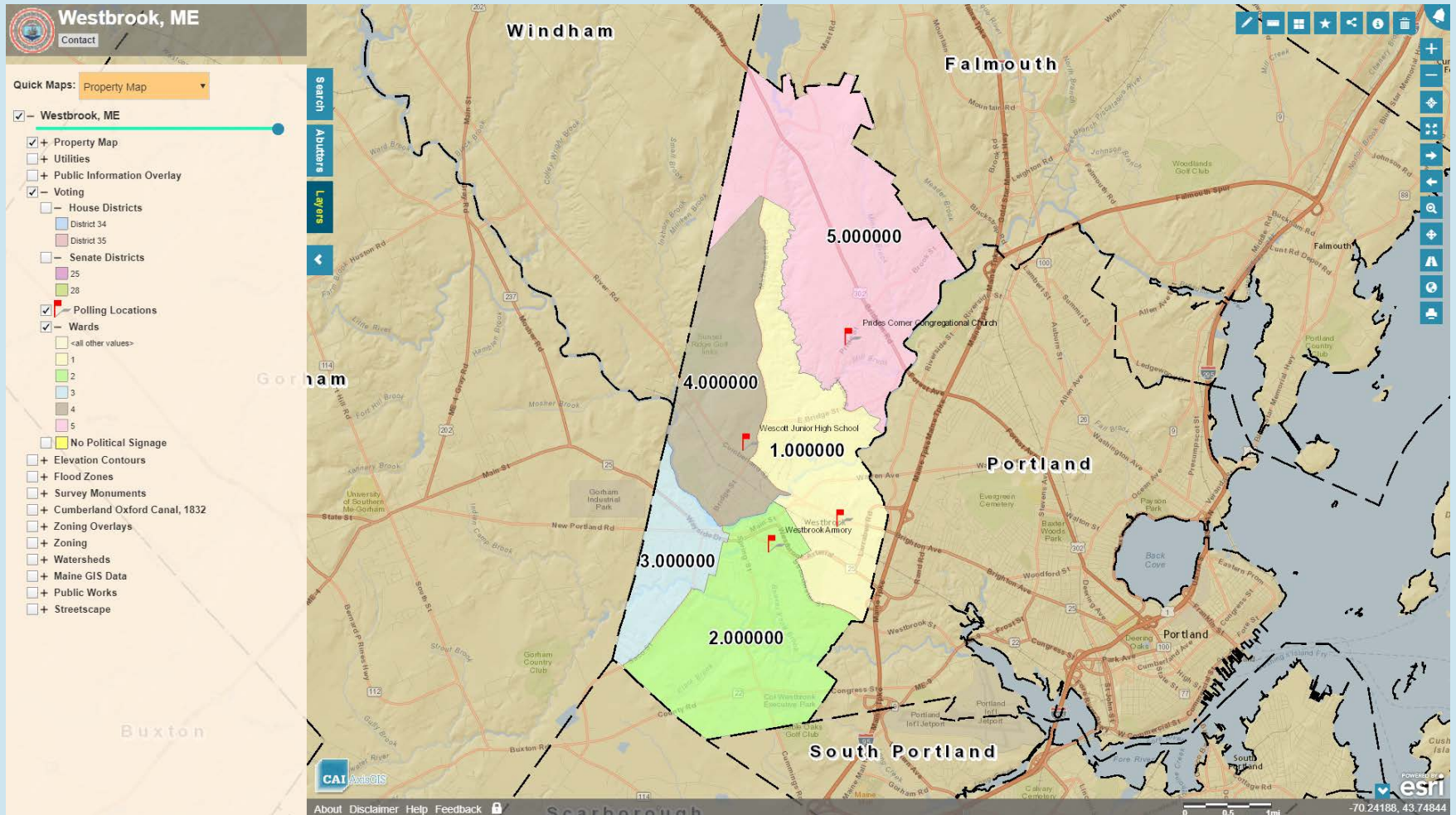
AxisGIS COMMON ADDITIONAL MAP LAYERS

SIGN INVENTORY



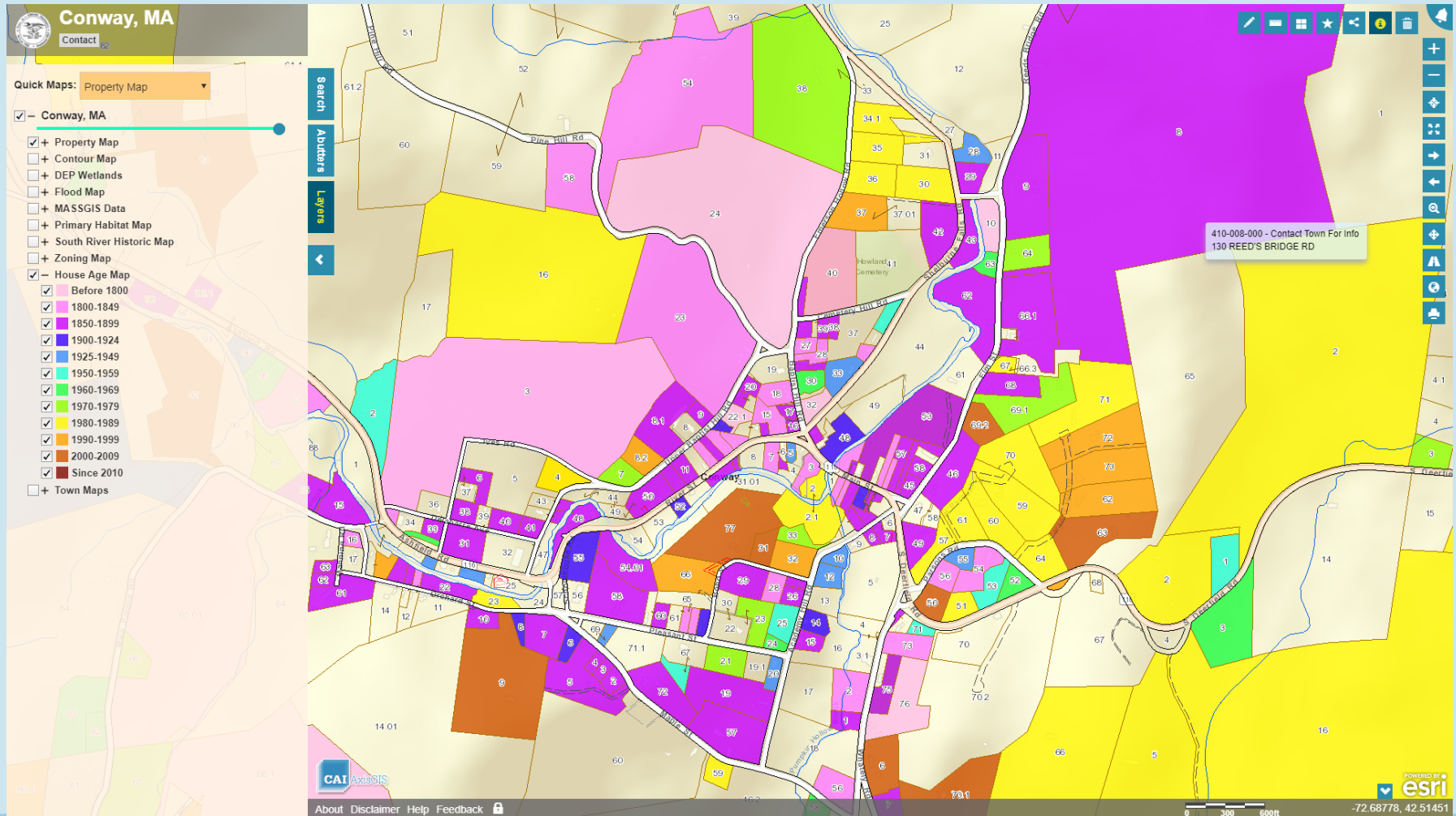
AxisGIS COMMON ADDITIONAL MAP LAYERS

VOTING / LEGISLATIVE DISTRICTS



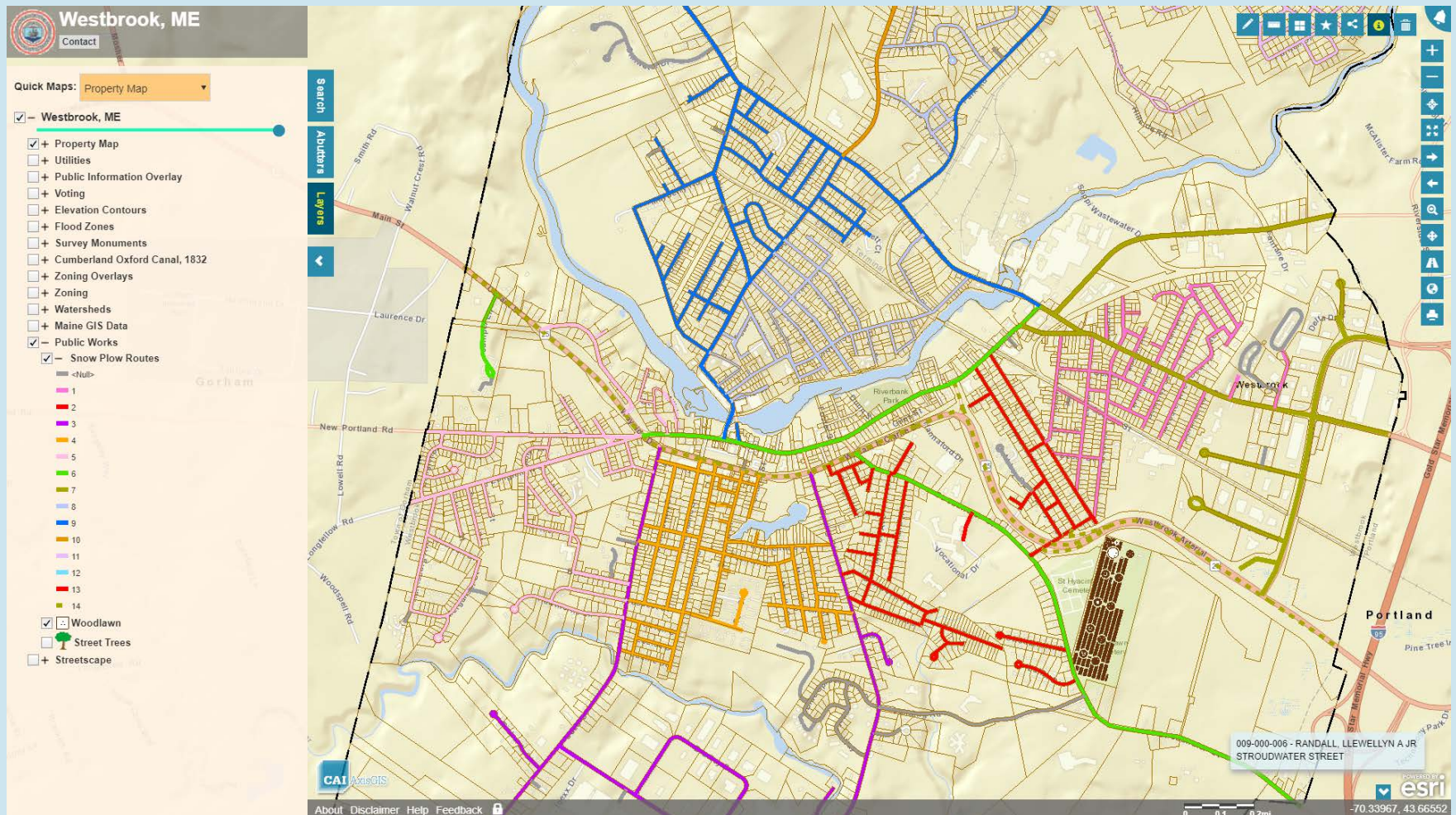
AxisGIS COMMON ADDITIONAL MAP LAYERS

HOUSE AGE MAP



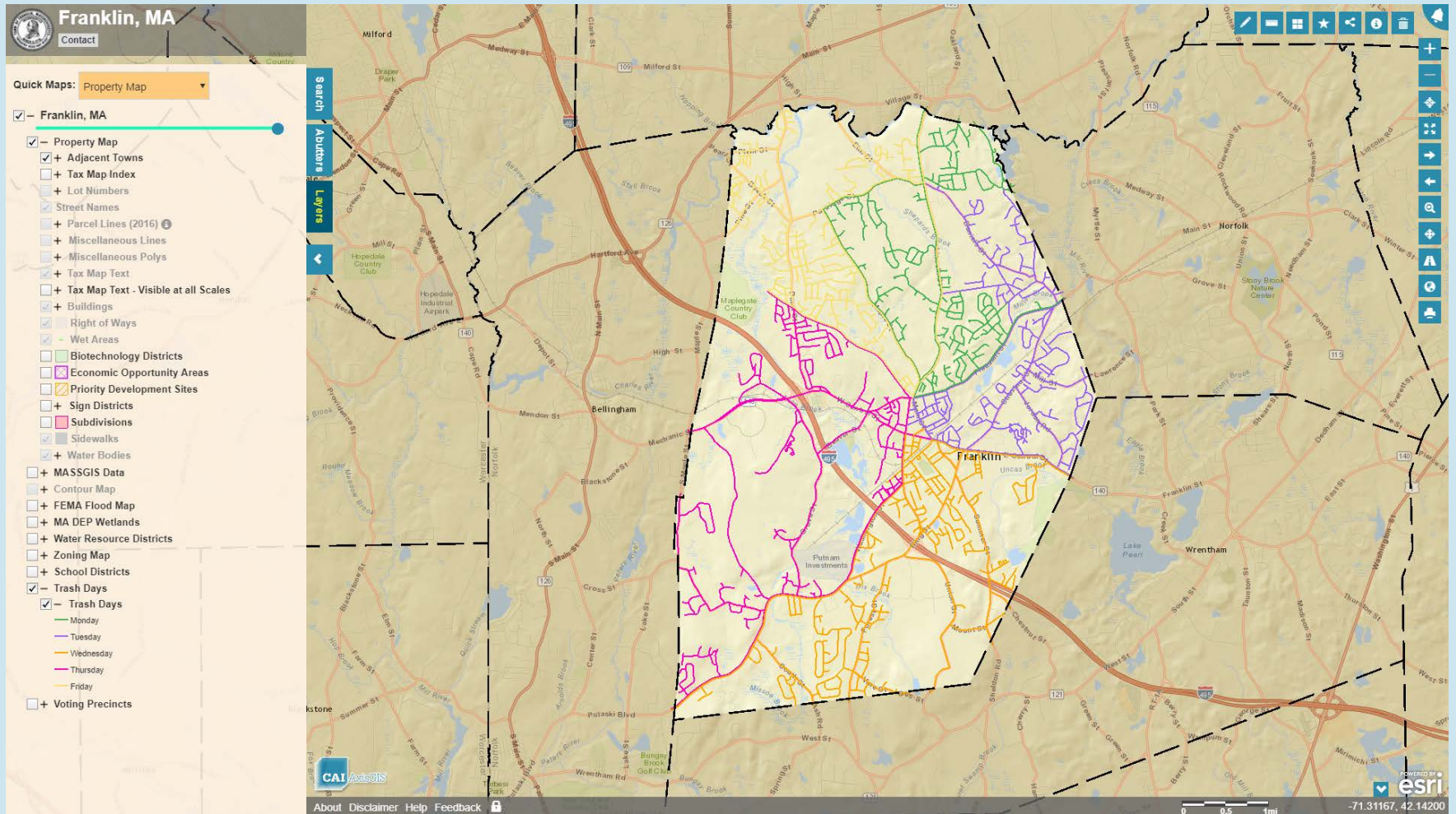
AxisGIS COMMON ADDITIONAL MAP LAYERS

SNOW PLOW ROUTES



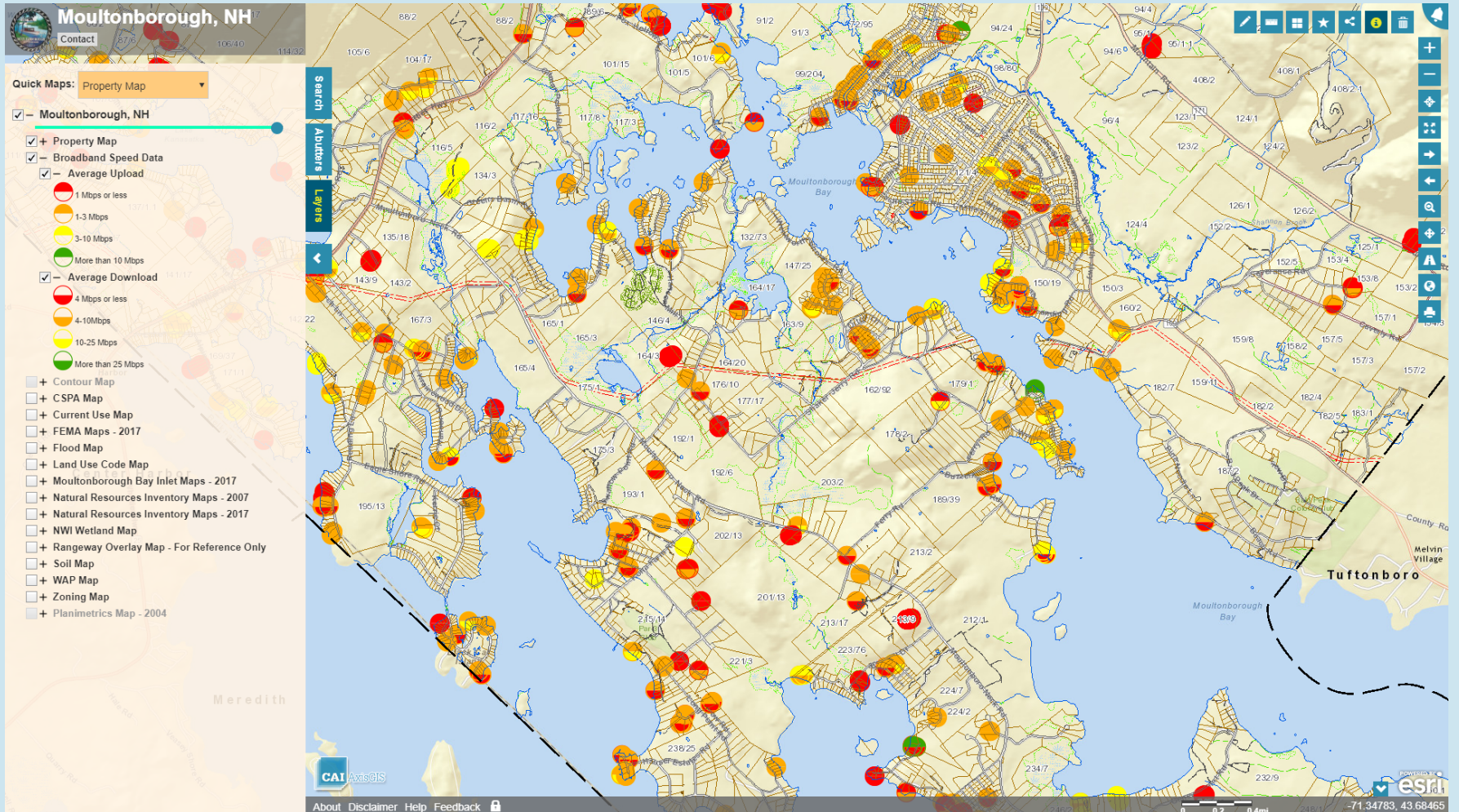
AxisGIS COMMON ADDITIONAL MAP LAYERS

TRASH DAYS



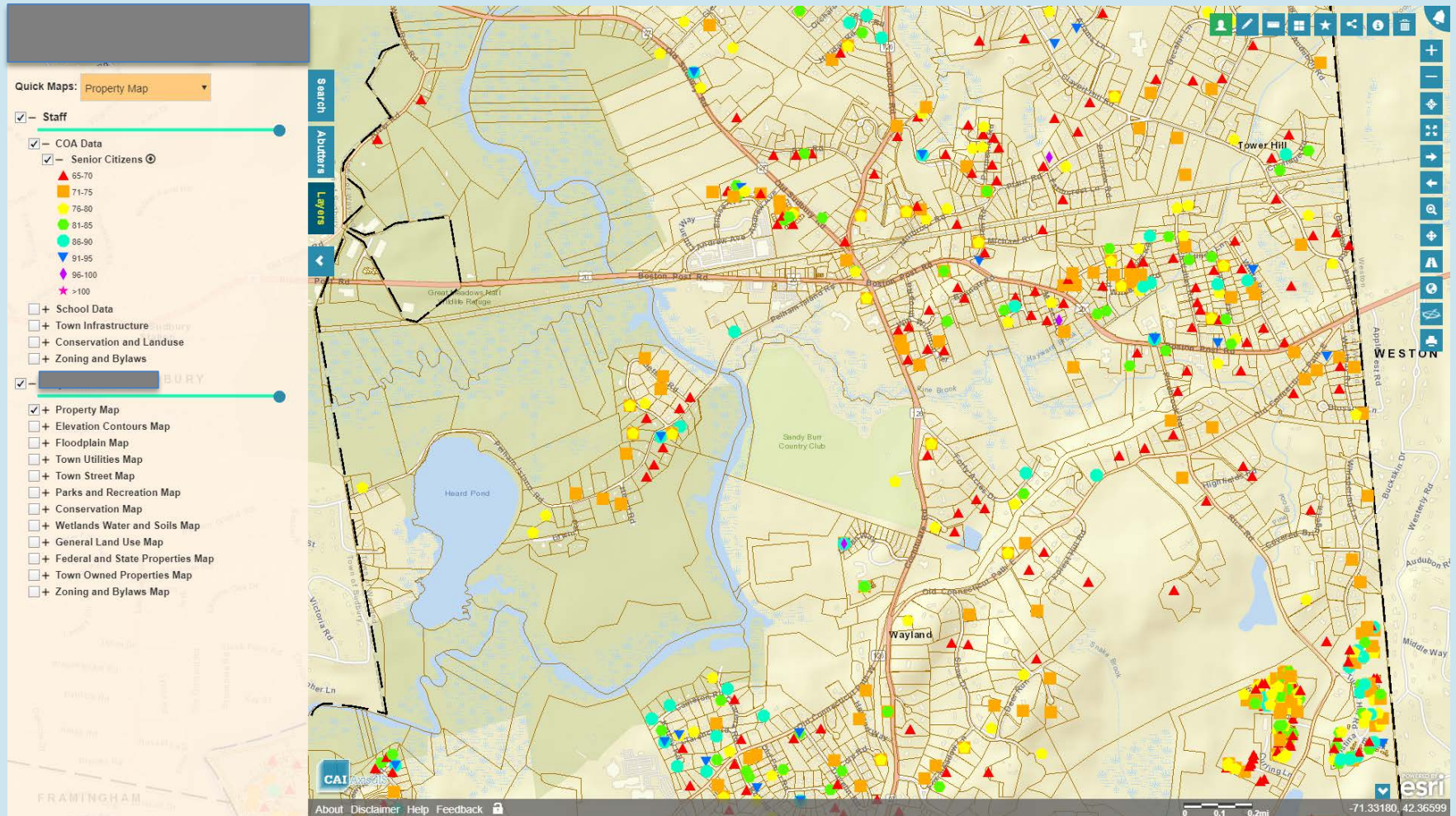
AxisGIS COMMON ADDITIONAL MAP LAYERS

BROADBAND SPEED DATA



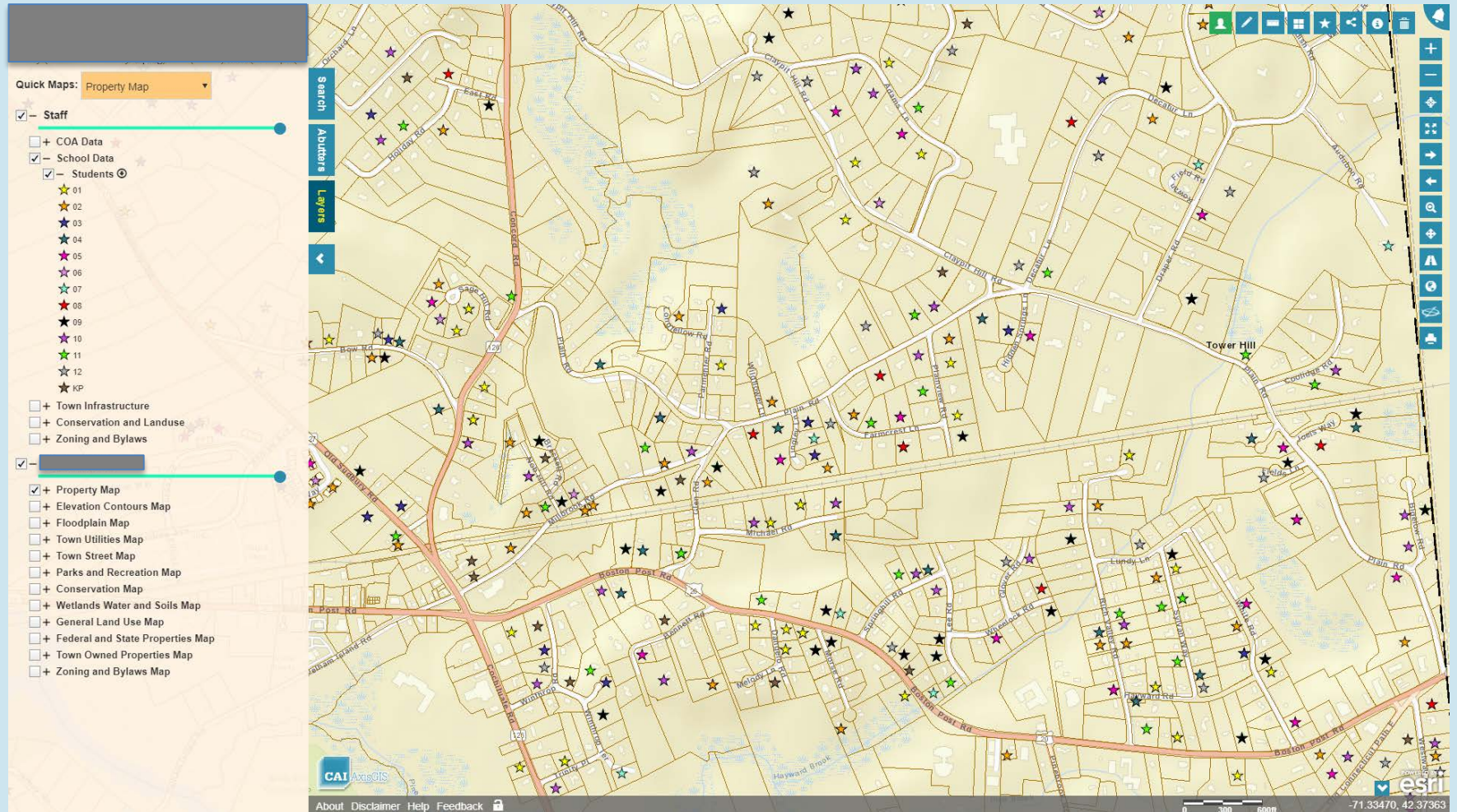
AxisGIS COMMON ADDITIONAL MAP LAYERS

SENIOR CITIZENS COA (COUNCIL ON AGING) DATA



AxisGIS COMMON ADDITIONAL MAP LAYERS

SCHOOL CHILDREN



AxisGIS SERVICE

Integrations and Dynamic Layer

- <https://www.axisgis.com/DerbyVT/> Patriot
- <https://www.axisgis.com/WaitsfieldVT/> NEMRC
- <https://www.axisgis.com/ColchesterVT/> Vision

Add-on Tools

- <http://www.axisgis.com/WeathersfieldVT> Documents
- https://www.axisgis.com/Newport_CityVT/ Editor

THANK YOU!

Aaron Weston, CMS, GISP

Business Development Manager

aweston@cai-tech.com

207-944-5898